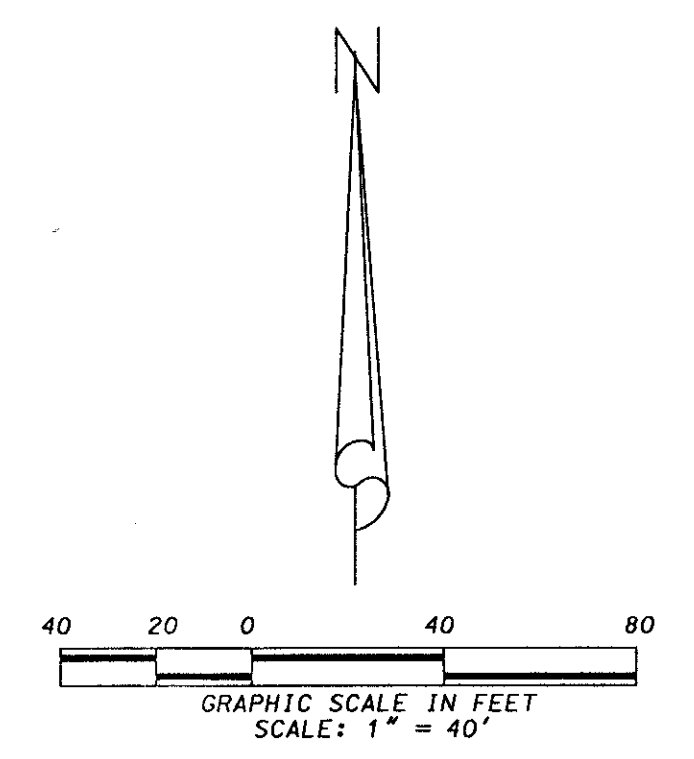
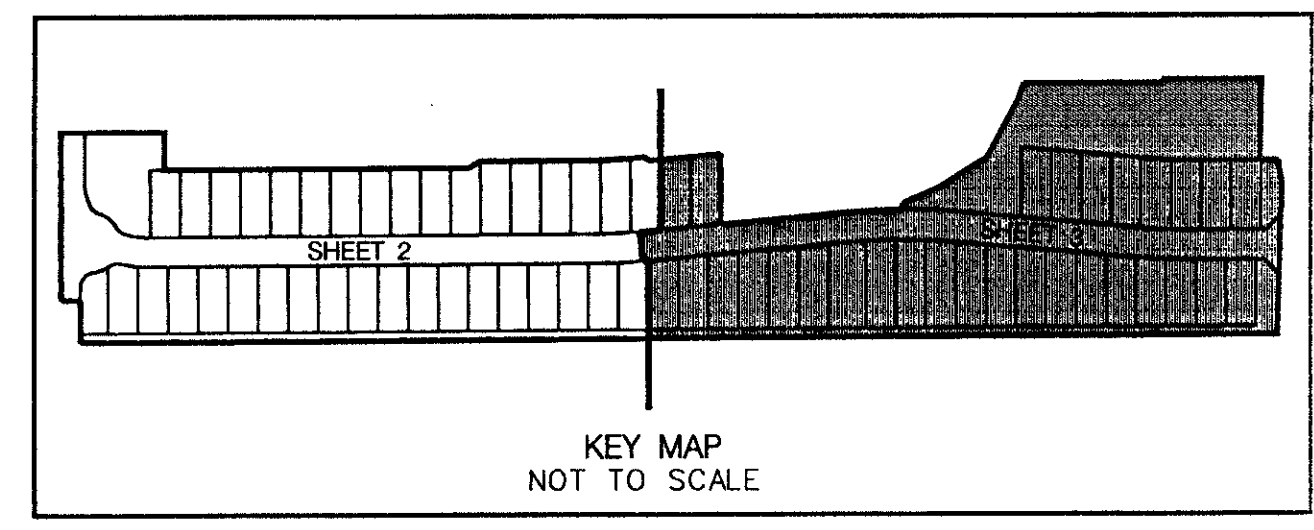


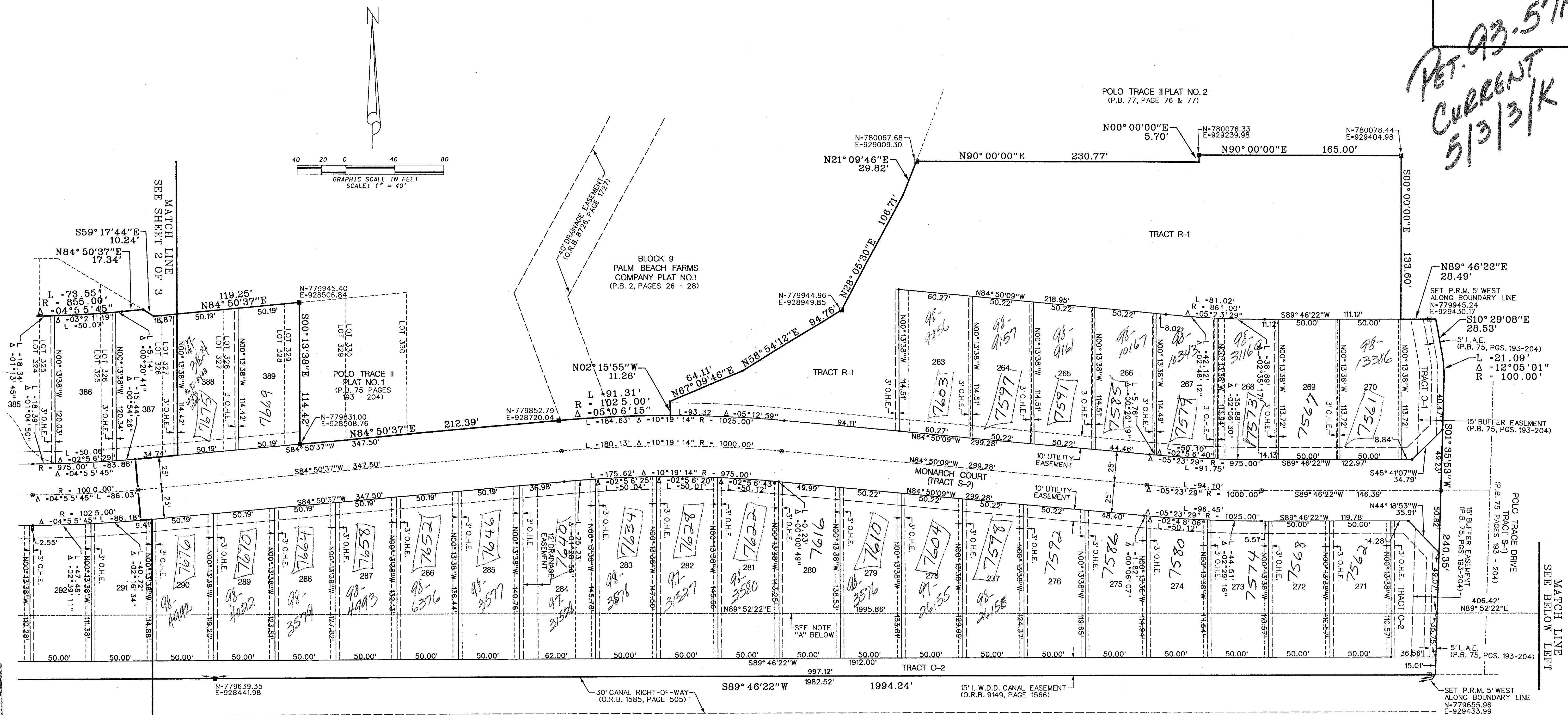
POLO TRACE II PLAT NO. 3

(A PART OF POLO TRACE II P.U.D.)
BEING A REPLAT OF A PORTION OF TRACTS 49 & 50, BLOCK 9,
PALM BEACH FARMS COMPANY PLAT NO. 1, P.B. 2, PAGES 26 - 28

AND A PORTION OF THE PLAT OF POLO TRACE II PLAT NO. 1, P.B. 75, PAGES 193 - 204,
LYING IN SECTION 9, TOWNSHIP 46 SOUTH, RANGE 42 EAST, PALM BEACH COUNTY, FLORIDA
MAY, 1998
SHEET 3 OF 3



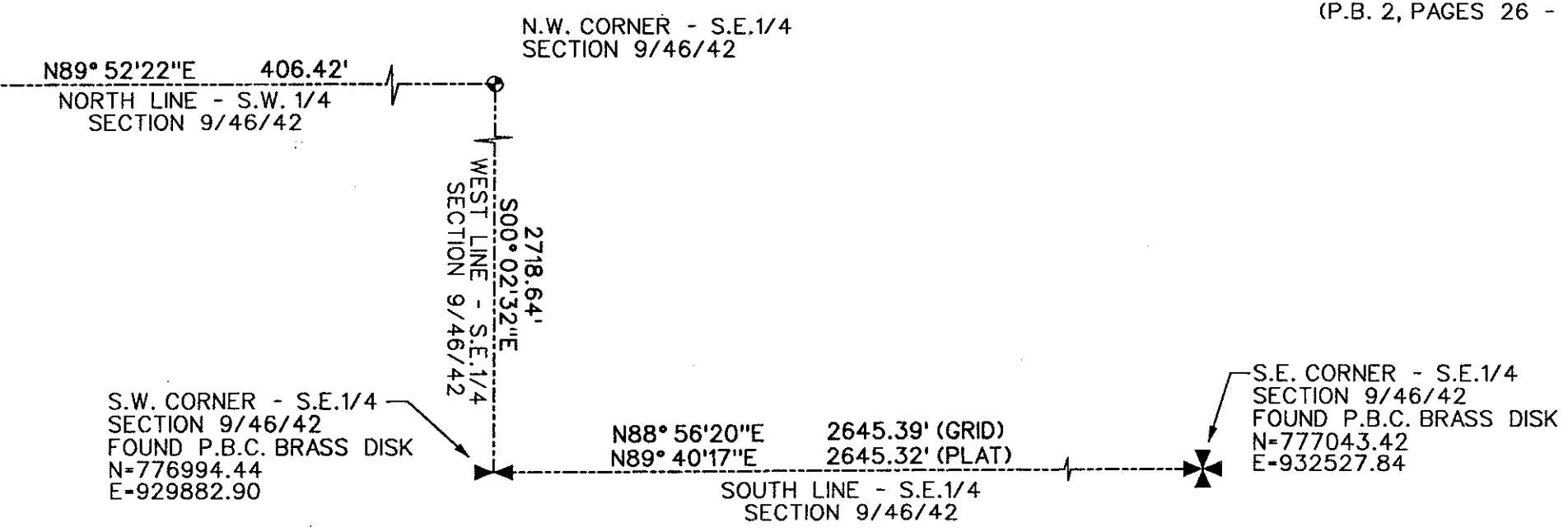
*PET. 93-57A
CURRENT
5/3/3/K*



BLOCK 9
PAGE 3
FLOOD MAP # 104
ZONING PUD
QUAD # 51
ST 93-57
ZIP CODE 33406
PLAT NAME PALM BEACH FARMS II PUD

MATCH LINE
SEE ABOVE RIGHT

MATCH LINE
SEE BELOW LEFT



83/3

0633-003



LIDBERG LAND SURVEYING INC.
LB4431

675 West Indiantown Road, Suite 200,
Jupiter, Florida 33458 TEL. 561-746-8454

FLD.	J.P.	JOB	97-03213061	FB.	Z70	PG.	71
OFF.	R.W.	DATE	09/10/97	DWG.	DSF-032B		
CKD.	D.C.L.	REF.	970323061ms	SHEET	3 OF 3		

NOTE "A"
NORTH LINE S.W. 1/4
SECTION 9/46/42